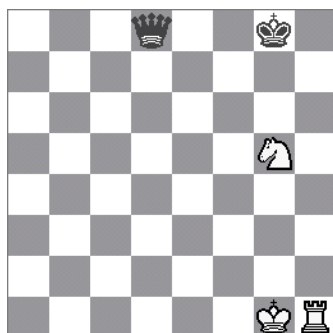
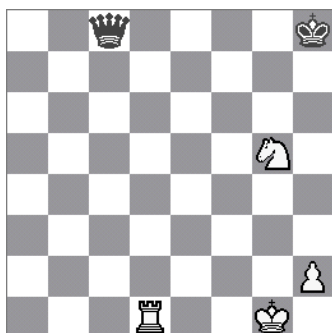
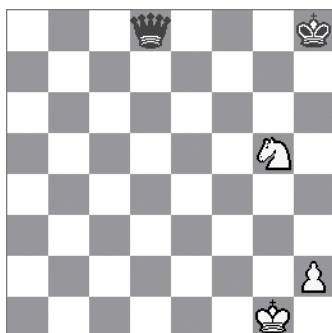


# SÍLA JEZDCE

ING.Vratislav HORA

Hlavní možností jezdců je (díky jeho specifickému chodu) možnost dát dvojí úder – vidličku.

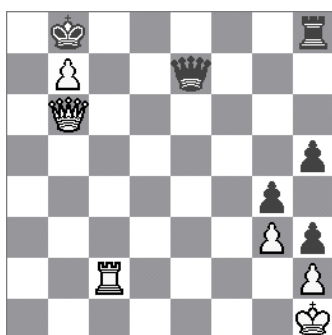
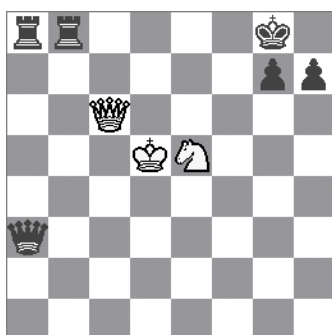


1.Jf7+ Kg7 2.Jxd8 +-

1.Vd8 (zavlečení dámy) 1...Dxd8  
2.Jf7+ +-

1.Vh8+ Kxh8 2.Jf7+ a remíza

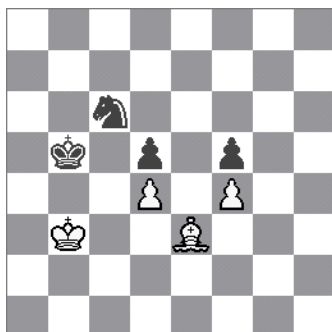
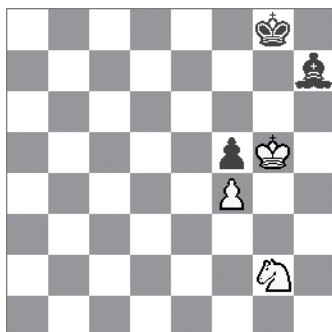
Nesmíme zapomenout ani na možnost dušeného matu a kombinační možnost při proměně pěšce.



1.De6 Kh8 2. Jf7 Kg8 3.Jh6 Kh8 4.Dg8!  
Vxg8 5.Jf7mat\_(Lucena 1497)

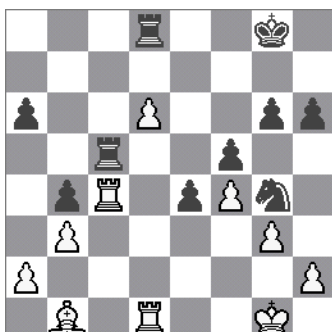
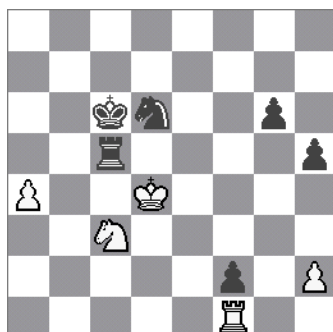
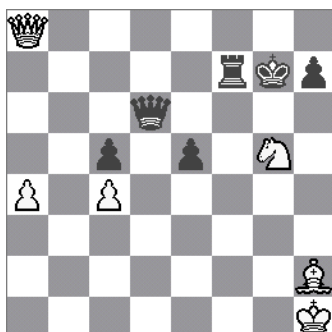
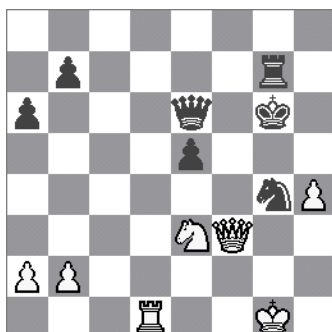
1.Vc8! Vxc8 2.Da7! Kxa7 3.bxc8J! Kb7  
4.Jxe7 (Lasker)

V koncovce vynikne jeho přednost zejména při boji na malém prostoru:



1.Kh6 Kh8 2.Jh4 Kg8 3.Jf3 Kh8 4.Je5  
Kg8 5.Jc6! Kh8 6.Je7 Sg8 7.Jg6 mat

1...Ja5+ 2.Kc3 Ka4! 3.Sf2 Jc6 4.Se3 Ja7  
5.Sf2 Jb5+ 6.Kd3 Kb3 7.Se3 Jc3 8.Sf2 Ja2  
9.Se3 Jb4+ 10.Kd2 Kc4-+



1.Vd6 Dxd6 2.Dxg4+ Kf7 3.Dxg7+ Kxg7 4.Jf5+-

1.Sxe5+ Dxe5 2.Dh8+ Kxh8 3.Jxf7+-

1...Jf5+ 2.Kd3 Vxc3+ 3.Kxc3 Je3 4.Vxf2 Jd1+-+

1...Je3! 2.Vxc5 Jxd1 3.Vc4 [3.Vd5? Jc3-+; 3.Vc6 Jc3 4.Sc2 Je2+ 5.Kf2 Jd4 6.Vc4 Vxd6 -/+]  
3...Vxd6! 4.Vxb4 Jc3 5.Sc2 Vd2-+

### Partiové ukázky:

1.d4 Jf6 2.Sg5 c5 3.dxc5 e6 4.Jc3 Sxc5 5.Je4? Jxe4!+- Orgoň-Hausner, Staré Město 2004

1.e4 e5 2.Jf3 d6 3.Sc4 Sg4 4.Jc3 h6? 5.Jxe5!! Sxd1 6.Sxf7+ Ke7 7.Jd5# Legal

1.e4 e5 2.Jf3 Jc6 3.d4 exd4 4.Sc4 d6 5.c3 dxc3 6.Jxc3 Sg4 7.0–0 Je5? 8.Jxe5 Sxd1 9.Sxf7+ Ke7 10.Jd5#

1.e4 e5 2.Jf3 Jc6 3.Sc4 Sc5 4.b4 Sxb4 5.c3 Sa5 6.d4! exd4 7.0–0 Jf6 8.Sa3 d6 9.e5! dxe5 10.Db3 Dd7 11.Ve1 e4 12.Jbd2 Sxc3 13.Jxe4 Sxe1 14.Vxe1 Kd8 15.Jeg5 Ja5 16.Je5! Jxb3 17.Jexf7+ Dxf7 18.Jxf7+ Kd7 19.Sb5+ c6 20.Ve7#

1.e4 e5 2.f4 Sc5 3.Jf3 d6 4.Jc3 Jf6 5.Sc4 Jc6 6.d3 Sg4 7.Ja4 exf4 8.Jxc5 dxc5 9.Sxf4 Jh5 10.Se3 Je5? 11.Jxe5! Sxd1 12.Sxf7+ Ke7 13.Sxc5+ Kf6 14.0–0+ Kxe5 15.Vf5# Alechin-Tenner, Karlovy Vary 1911

1.d4 Jf6 2.c4 e6 3.Jf3 b6 4.g3 Sb7 5.Sg2 Se7 6.Jc3 0–0 7.Dc2 c5 8.d5! exd5 9.Jg5 Jc6 10.Jxd5 g6 11.Dd2 Jxd5? 12.Sxd5 Vb8? 13.Jxh7! Korčňoj-Karpov, 1974

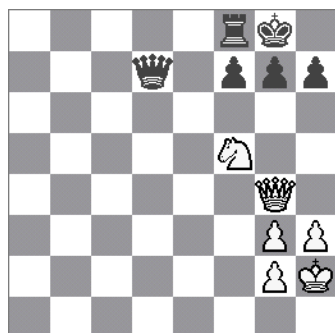
1.e4 e5 2.Jf3 Jc6 3.Sb5 a6 4.Sa4 Jf6 5.Jc3 Sb4?! 6.Jd5 Sa5 7.0–0 b5 8.Sb3 d6 9.d3 Sg4 10.c3 Je7 11.Jxe5! Sxd1 12.Jxf6+ gxf6 [12...Kf8 13.Jed7+ Dxd7 14.Jxd7+ Ke8 15.Vxd1 Kxd7 16.Sxf7+ -] 13.Sxf7+ Kf8 14.Sh6# Tarrasch-Čigorin, 1893

1.e4 c5 2.Jc3 Jc6 3.Jge2 Jf6 4.g3 d5 5.exd5 Jd4 6.Sg2 Sg4 7.d3 Jxd5 8.Jxd5 Dxd5 9.Sxd5 Jf3+ 10.Kf1 Sh3#

1.e4 e5 2.Jf3 Jc6 3.Jc3 g6 4.d4 exd4 5.Jd5 Sg7 6.Sg5 Jge7 7.Jxd4! Sxd4 8.Dxd4! Jxd4 9.Jf6+ Kf8 10.Sh6#

1.d4 Jf6 2.c4 e6 3.Jf3 c5 4.Jc3 cxd4 5.Jxd4 Sb4 6.Dc2 Jc6 7.e3 0–0 8.Sd3 Je5 9.Se2 b6 10.0–0 Sb7 11.f3 Vc8 12.Da4 a5 13.Jcb5 d5 14.cxd5 Jxd5 15.a3 Vxc1!! 16.Vaxc1 Sd2 17.Vcd1 Sxe3+ 18.Kh1 Dh4 19.g3 Dh3 20.Jd6 Jg4! 21.fxg4 Dg2+ 22.Kxg2 Jf4# Landetty-Hracek, 2004

1.d4 d5 2.c4 e6 3.Jc3 Jf6 4.Sg5 Se7 5.e3 0–0 6.Jf3 Jbd7 7.Vc1 c6 8.Sd3 dxc4 9.Sxc4 Jd5 10.Sxe7 Dxe7 11.0–0 Jxc3 12.Vxc3 e5 13.Dc2 exd4 14.exd4 Jf6 15.Ve1 Dd6 16.Jg5 Sg4 17.Vg3 Sh5 18.Vh3 Sg6? 19.Dxg6!! hxg6 20.Sxf7+ Vxf7 21.Vh8+ Kxh8 22.Jxf7+-



### Jezdec a dáma:

Možnosti jezdec ve spolupráci s dámou ukazuje vedlejší diagram, kde zároveň hrozí mat na g7 a odtažný šach. Jh6 se získá dáma – obě tyto hrozby nemůže černý (i když je na tahu) pokrýt. a proto prohraje.